



# **WATAUGA VALLEY ART LEAGUE NEWSLETTER**

## **DECEMBER 2014**

News Release

Watauga Valley Art League

Annual Christmas Potluck Luncheon

11:00 am to 1:00 pm , Saturday, December 20, 2014

Johnson City Memorial Park Community Center

The Watauga Valley Art League will meet Saturday, December 20, 2014 at the Johnson City Memorial Park Community Center, 510 Bert Street, Johnson City, TN from 11:00 am until 1:00 pm. An informal art critique begins at 10:30 for those interested.

This is our annual Christmas Potluck Luncheon and your opportunity to bring art supplies and items to sell. All proceeds will go to benefit WVAL.

For more information about the meeting or WVAL please contact Ed Puhr at (423) 467.4285 Information is also available at [www.wataugavalleyartleague.com](http://www.wataugavalleyartleague.com) or on Facebook at *Watauga Valley Art League*.

**\*\*\* Dues for 2015: \$33 per person and \$45 per couple and \$18 per art student \*\*\*  
\$15.00 after July 1st**

Mail to: **Watauga Valley Art League, PO Box 2177, Johnson City, TN 37605**

### 2014 WVAL Exhibits

Christmas Art Show (Sycamore Shoals)

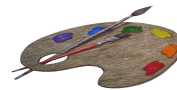
November 30, 2014 to January 4, 2015

**\*\*\*For your convenience, all forms and applications are in PDF Format and can be downloaded and printed from the WVAL Website\*\*\***

### Art Classes:

URBAN BIRD: Morning art class - TUES. 9 AM; evening art class – Tues. 6:30 PM. All media & all levels. \$30.00 for 8 wks. At Kiwanis Park,

- W. Market St., Johnson City. New classes every 8 wks. Call Urban at 743 4950.
- ART HOLSCLOW Basic Acrylics – Weds 12:30-2:30 at the Community Ctr. Call Art 543-6676 for details
- JUDY O'HARA Acrylic Courses – Please contact her at 833-5525 or [judyohara@ymail.com](mailto:judyohara@ymail.com)
- LINDA CAMPBELL for class info 477-8196



**Reminder: The next board meeting will be December 15, 2014 at Shoney's in Johnson City. This meeting is for all 2014 and 2015 board members, elected and appointed.**

Any WVAL Member interested in having their profile art portfolio placed on the WVAL Website or Facebook Page, please submit a short biography along with several samples of artwork to [WVAL@WataugaValleyArtLeague.com](mailto:WVAL@WataugaValleyArtLeague.com).

Please check us out at [WWW.WataugaValleyArtLeague.com](http://WWW.WataugaValleyArtLeague.com) and [WWW.Facebook.com/WataugaValleyArtLeague](http://WWW.Facebook.com/WataugaValleyArtLeague)

Sycamore Shoals Historic Park is hosting the annual Christmas Art Show by Watauga Valley Art League artists from November 30, 2014 through January 4, 2015. The opening reception drew a large crowd who were asked to vote for their favorite painting and artist. Alphabetically, the four winners for the "People's Choice" are: **Susan Donner** for "Diana", **Linda Loffmin** "Sir William", **Judy O'Hara** "Vase and Tapestry", and **Ken Simmelink** "Fred".

The show can be viewed during Park hours from 9:00 am to 4:00 pm weekly and 1:00 pm to 4:00 pm Sunday. The artwork consists of beautiful paintings representing various styles and mediums. Most of the artwork is for sale and will make great holiday gifts.

**Watauga Valley Art League  
General Membership Meeting  
November 15, 2014**

10:30 am – Critique and fellowship.

Meeting was called to order by Ed Puhr at 10:59 am with a welcome to all members and guests. Nyela Cohoon made a motion to accept the minutes from the October meeting as written and the motion was approved. The General Membership Meeting in December will consist of the annual potluck luncheon. Members will have the opportunity to bring any art supplies and related items in order to be sold and the proceeds will go to benefit WVAL.

The Johnson City Community Health Center needs artists to hang artwork at their location. The Health Center staff will hang and also take the artwork down at the end. There was a sheet passed for artists to sign up. This will be a single artist each month and will be the artists responsibility to contact the center in order to make arrangements.

Linda Campbell – Treasury report: There is currently \$2,944.43 in the general account and \$1,095.67 in the Newell/Hendershot account.

Judy O'Hara – Membership: There are 30 members that have signed in and no guests. WVAL will start collecting dues for 2015.

Naomi Neis – Video Library: Beginning Rules of Water Color is missing, should anyone know the where the video is, please let Naomi know.

The December Board Meeting will be at Shoney's in Johnson City, all 2014 and 2015 elected and appointed board members are invited to attend.

Ed Puhr did an inspirational reading for artists and introduced all nominated members to serve as WVAL Board Members for 2015 and asked all nominees to leave the room and called for a vote. The entire slate of officers was approved unanimously.

The Roving Gallery will be a benefit of membership in WVAL and the membership fee will include the Roving Gallery. The next hanging for the Hopland Medical Center will be the end of January.

The One Acre Cafe is looking for artists to hang one month at a time. If interested, contact them to make arrangements.

All artists painted Christmas Cards for the Senior Center to include in their Christmas baskets delivered to shut ins.

Meeting adjourned at 11:25 am.

Respectfully submitted by Elton O'Hara