

WVAL Membership Meeting



Sycamore Shoals State Park
1651 W. Elk Ave.
Elizabethton, TN - 423-543

SECOND SUNDAY OF EVERY
MONTH - 1:30 - 3:30P.M.

Art Critique @ 1:30, Membership
Meeting Starts @ 2:00,
Program starts @ 2:30



Watauga Valley Art League Newsletter August 2018

The Watauga Valley Art League welcomes all who wish to visit us during our educational and instructive monthly gatherings. Be Happy and paint more!

*The next WVAL General Membership Meeting is Sunday August 12 at Sycamore Shoals State Park. The program will be presented by David and Ruth Booth. She is a certified Robert Warren Oil Instructor. She teaches on a toned canvas with instructions and emphasis on values done in acrylic then teaches the oil painting. David makes giclee prints on gallery wrapped or stretched canvas that look like an original painting, it is hard to distinguish the difference. He also makes special prints for war veterans. **You won't want to miss these folks even if you do not paint in oils.***

WVAL artists' artwork may be seen at www.wataugavalleyartleague.com. For more information about the Watauga Valley Art League please contact Judy Donley, 423 547-9707 or email us WVAL@WataugaValleyArtLeague.com

***** Dues for 2018: \$33 per person (\$45 per couple and \$18 for students) *****

Mail to: **Watauga Valley Art League, PO Box 2177, Johnson City, TN 37605**

*****For your convenience, all forms and applications are in PDF Format and can be downloaded and printed from www.WataugaValleyArtLeague.com*****

Mark your calendars for 2018

Sunday, August 5, 1:30pm.....Meet the 6x6 artist reception, Sycamore Shoals
Sunday, August 5 to Sunday August 26.....6x6 Art Show at Sycamore Shoals
Monday, August 6..... WVAL Board Meeting, One Acre Cafe
Sunday, August 12..... WVAL General Membership Meeting, Sycamore Shoals
Monday, September 3.....WVAL Board Meeting, One Acre Cafe
Sunday, September 9.....WVAL General Membership Meeting Sycamore Shoa

**DATES TO
REMEMBER**

The WVAL 6x6 Art Show is currently on display at Sycamore Shoals. A few members have artwork on display and have become award winning artists. We've had a very good turn with a lot of people visiting and we have had a few artists that have sold their artwork during this show. Below is a statement by the 6x6 judge, Bill Bledsoe.

First, I would like to extend my appreciation to the League for asking me to judge this show. I regret that I am not making this statement in person today, but am certain that this small dissertation will communicate my thoughts in a more economical manner, meaning that I will get to the point and not talk too much!

I had mentioned in my lecture several months ago how important I think Art Leagues are to our community and the perpetuation of art in general. As a professor of art, I find, more times than not, aspiring young artists pursuing a career in the arts who have found encouragement and direction having participated in their community art leagues as much, or more so, than high school courses. Much of the interest and support I encounter for the arts comes from the communities of art leagues that are made up of individuals who have a great appreciation and vested interest in art. This is tempered by their own pursuit of excellence in drawing, painting, sculpture and photography. Thus, participating in shows of various kinds is an important part of the pursuit to grow as an artist.

I find shows with particular focus, such as this exhibit, particularly significant in the overall development of an artist's discipline. There are two main aspects to a show that focuses on the actual size of submitted artwork, in this case 6" x 6" maximum. Those aspects are technical and aesthetic in nature. Technical spotlights the idea of an artist committed to working on a specific item or subject with minimal "environment" buffering the subject as it would relate to a larger format or canvas size. Simply put, regardless of the size of surface, an artist should be able to visually fragment any area of the composition and find a small painting within the bigger picture. We often immerse ourselves so much in the subject that all other areas of the painting are often overlooked! It should be the opposite! Creating work on a "small" scale forces our hand to both "fill the canvas" corner to corner and, in many cases, set aside needless detail. This is a significant aspect to an artist's skill in creating good art regardless of size or medium. Knowing what to leave in and what to take out!

Aesthetic aspects of working on a small format are centered in the "sense of intimacy." The artist, in choosing a small format, is purposefully engaging the viewer to focus on a specific idea with little or no surface ornament or supporting elements arranged around the subject to make it work or seem more appealing. Working small is straight to the point!!!!!! This requires the image to be "accomplished". People are often compelled, impart, by very large work and very small work. Large work envelopes the viewer and small work draws them in! The success or failure of an artist's work is often measured by this reaction. Due to the scale of 6 x 6 inch work, presentation of the smaller images needs the same level of attention as the work itself. All artists struggle in some manner with the presentation of their art and it is often a distant or second thought. How a small work is presented, assuming the work is good, can make or break the overall success of the experience of seeing the art! I encourage the League not only to make the small format artwork part of the overall objective of the group but explore the various artistic ways in which it can be presented.

This collection of work conveys a wide variety of technique and perspective of subject matter as well as a element of humor! All of the entries had aspects of accomplishment that warrant consideration. As recognized by the award of a ribbon where specific works were standouts in their categories. I would like to refer to a few works as it relates to the aforementioned comments I made about technique and intimacy. "Copy of a Portion of O'Keefe" is a good example of "getting to the point"! This work qualifies as a master variation which is an important part of an artist's portfolio: the study and interpretation of masterworks. We can learn a lot from the greats. It is the second to having those artists in our presence! "The Salt House" demonstrates a high sense of detail in a small format, whereas, "Blue and White" and "Waterfall" convey a simple straight forward approach; one with minimal color and the latter with forceful post-impressionist application of paint. "Elk River Falls" is a wonderful example of focus on the subject and presentation. It was nice to see non-subjective imagery in the collection. "Free Form #1" was a nice piece representing several submitted works by this artist in the same vein.

"Edward Hopper", "Bluebird" and "Sprout" have that sense of humor I mentioned and were executed well in their respective mediums. The "Dancer", "The Swimming Fish", and "Winter Night" have a nice "naive" approach to subject matter whereas "Sparrow and Lavender", "Summer Sipper" and "Working Class" are more focused on technical rendering and application of medium in composition. Finally, I found "Laundry Day 2" simply charming. The manner in which it was conveyed in size and medium was just delightful and is a fitting way to bring to close these evaluations of the collection overall. I applaud every entry and encourage each member to participate in group shows and competitions. We as artists, learn first and foremost from each other! I believe that is the primary mission of any art league and I am certain that is at the heart of the Watauga Art League.

With Great Appreciation,

William Baxter Bledsoe

**Watauga Valley Art League (WVAL)
6X6 Award Winning Artwork and Artists**

Advanced Watercolor



**First Place
Barbara Jernigan
"Summer Sipper"**



**Second Place
Linda Loffmin
"Edward Hopper"**

Intermediate Watercolor

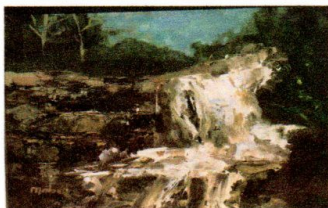


**First Place
Judy O'Hara
"Sparrow & Lavender"**

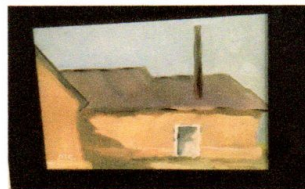


**Second Place
Pat Sheets
"Laundry Day II"**

Oil Advanced



**First Place
Mabe Collins
"Waterfall"**

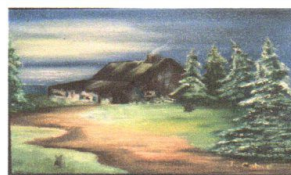


**Second Place
Mabe Collins
"Portion Copy of O'keeffe"**

Oil Intermediate



First Place
Ken Doak
"Blue & White"



Second Place
Judy Cable
"Winter Night"

Advanced Acrylic



First Place
Angie Shepherd
"The Salt House"



Second Place
Judy O'Hara
"Sprout"

Intermediate Acrylic



First Place
"The Dancer"
Judy Donley

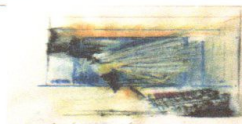


Second Place
"Swimming Fish"
Judy Donley

Advanced Other



First Place
Diane Allen
"Elk River Falls"



Second Place
"Free Form I"
Glenna Elsie

Intermediate Other



First Place
Judy Cable
"Working Class"



Second Place
Mary Hooper
"Bluebird"